

# Voodoo Server



SYNERGISTIC RESEARCH

NEVER COMPROMISE • [SYNERGISTICRESEARCH.COM](http://SYNERGISTICRESEARCH.COM)

## INSTRUCTIONS FOR USE

### Synergistic Research Voodoo Server



**READ THESE INSTRUCTIONS  
HEED ALL WARNINGS  
FOLLOW ALL INSTRUCTIONS**



#### WARNING: Avoiding Electrical Shocks

Do not operate the Synergistic Research Voodoo Server if any kind of liquid has been deposited onto or near it. Do not store open liquid containers near or around the Synergistic Research Voodoo Server when it is in operation. Do not expose the Synergistic Research Voodoo Server to rain or other weather elements.

#### WARNING: Electrical Storm Precautions

During severe weather conditions such as electrical storms, perform the following procedures:

1. Turn off all of your electronic equipment, including the Voodoo Server.
2. Disconnect all of your electronic equipment from your power outlets, including the Voodoo Server.
3. Do not reconnect your electronic equipment until the storm is well passed. If you can hear thunder, lightning and its potentially destructive effects are still nearby.

#### WARNING: No User Serviceable Parts Inside

Never attempt to open or disassemble your Synergistic Research Voodoo Server. This unit is factory sealed and cannot be opened. There are no user-serviceable parts inside. For service inquiries, please contact Synergistic Research directly by calling (949) 476-0000 or via the contact form at [www.SynergisticResearch.com](http://www.SynergisticResearch.com).

#### WARNING: Electrical Grounding

The Synergistic Research Voodoo Server requires a properly grounded power outlet for optimal performance and safety. If you are not certain if your electrical configuration is properly grounded, have it inspected by a qualified electrician.



WARNING: To reduce the risk of electric shock do not attempt to open.  
No user-serviceable parts inside. Refer servicing to qualified service personnel.



**SYNERGISTIC RESEARCH**

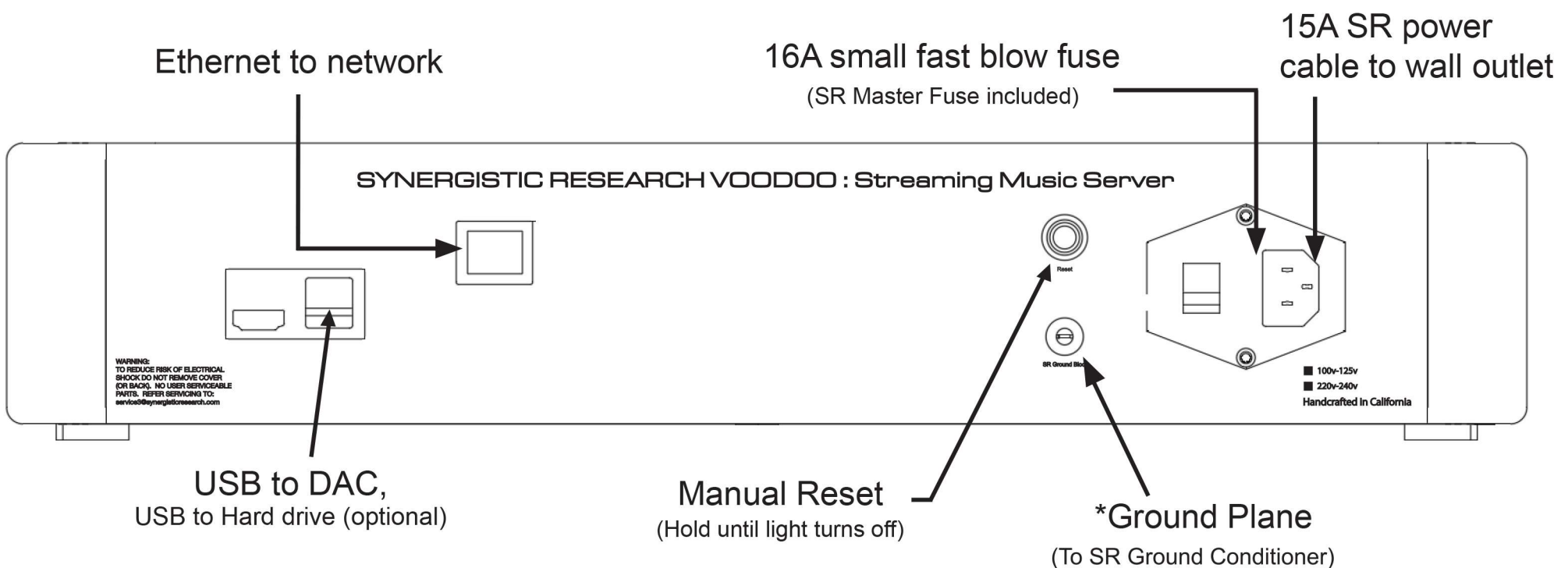
NEVER COMPROMISE • [SYNERGISTICRESEARCH.COM](http://SYNERGISTICRESEARCH.COM)



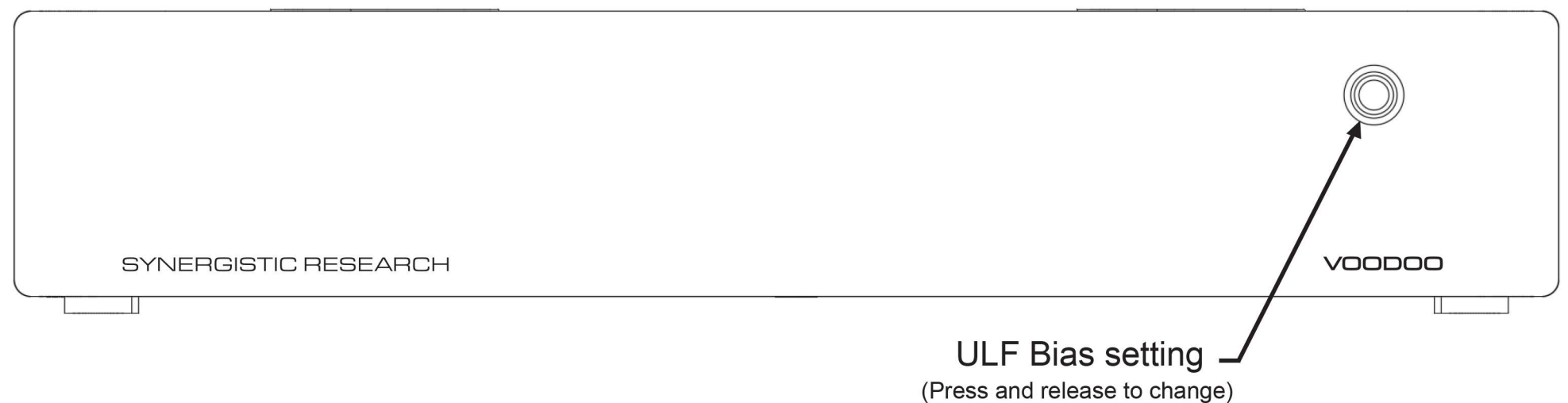
# Reference Diagrams

## Voodoo Server setup -

## Rear View



\* **Ground Plane** - Ground plane designed for use with Synergistic Research ground blocks and Synergistic Research grounding cables only (sold separately).



### Placement:

- Locate your Synergistic Research Voodoo Server on an audio rack shelf or an isolated amp stand. It is necessary to ensure at least 5 inches of clearance above the Voodoo Server to allow for proper ventilation. Do not place it on top of or directly underneath any other components. If you are using two Voodoo Servers, each should be placed on its own isolated shelf.
- Place the included MiG Isolation Footers under your Voodoo Server—one in the front with the "round side" facing up and two at the back corners with the "round side" facing down. After your Voodoo Server has been powered on and operating for at least 24 hours, flip all three MiG Footers to the opposite orientation. Alternate between both configurations and listen carefully to determine which option delivers the best audio experience in your system.

### Power Up:

- Start with the red switch on the rear of the unit in the off position.
- Connect the supplied SR power cable to your Voodoo Server via the 15 amp IEC connection in the rear of the unit.
- Plug the SR power cable into the wall or your Synergistic Research power conditioner.
- Connect your Voodoo Server to your network via the ethernet port in the rear of the unit. We highly recommend using a Synergistic Research Ethernet cable for maximum performance.
- Connect your Voodoo Server to your DAC via one of the two USB ports in the rear of the unit. We highly recommend using a Synergistic Research USB cable for maximum performance.
- Optional - Connect the "SR Ground Block" port to a Synergistic Research Active Ground Block via a Synergistic Research ground cable only.
- Flip the red switch on the rear of the unit to on to power the Voodoo Server.



**SYNERGISTIC RESEARCH**

NEVER COMPROMISE • SYNERGISTICRESEARCH.COM

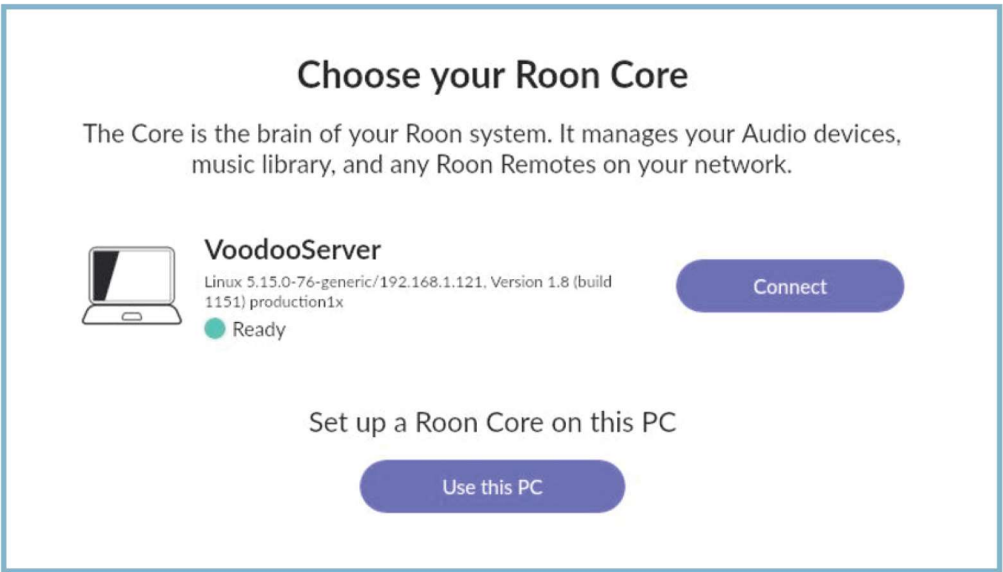
# Quick Start Guide

## Installing Roon Remote:

- On mobile or tablet
  - Go to the App Store (iOS) or Google Play Store (Android) on your device.
  - Search for "Roon Remote" and download the app.
- On PC or Mac
  - Visit the Roon website(<https://roon.app/en/downloads>) to download the Roon Remote software for your computer's operating system.
  - Install the software.

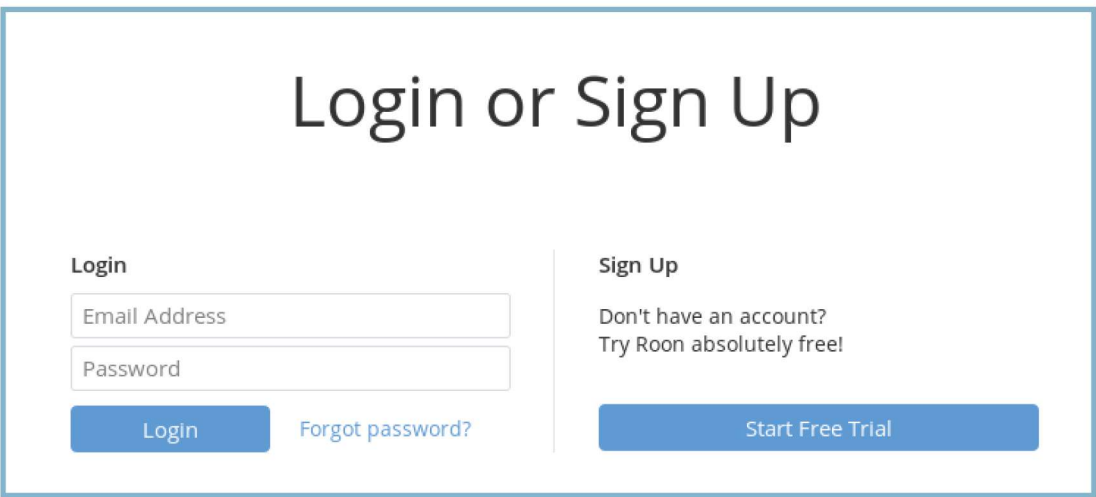
## Select your Voodoo as the Roon core:

- Open Roon Remote:
  - Launch the Roon Remote app on your device or computer.
  - Accept the license agreement
- Choose your Roon Core:
  - Be sure your remote and core are connected to the same network
  - Connect to Voodoo Server



## First Launch:

- When you launch Roon for the first time, you'll be taken through a series of screens to help get you setup. You will choose how you would like to set up Roon, what you want to import, and who it's for.
- Logging In
  - After connecting to the Roon Core, you will see a Login screen:



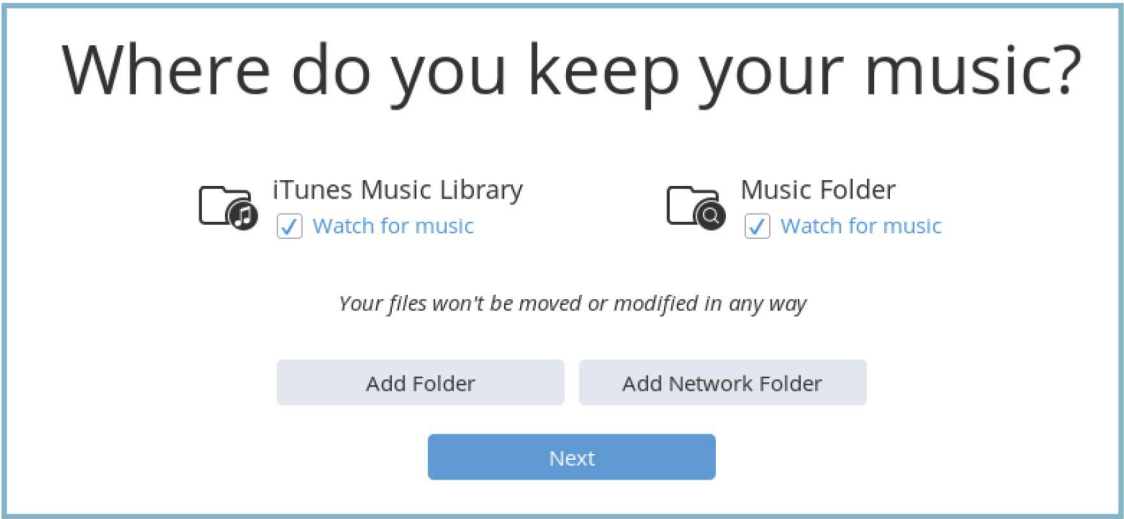
- You will need to log in to Roon using the credentials you signed up with on the Roon website. If you haven't signed up yet, you can click Start Free Trial to get going on.





# Quick Start Guide

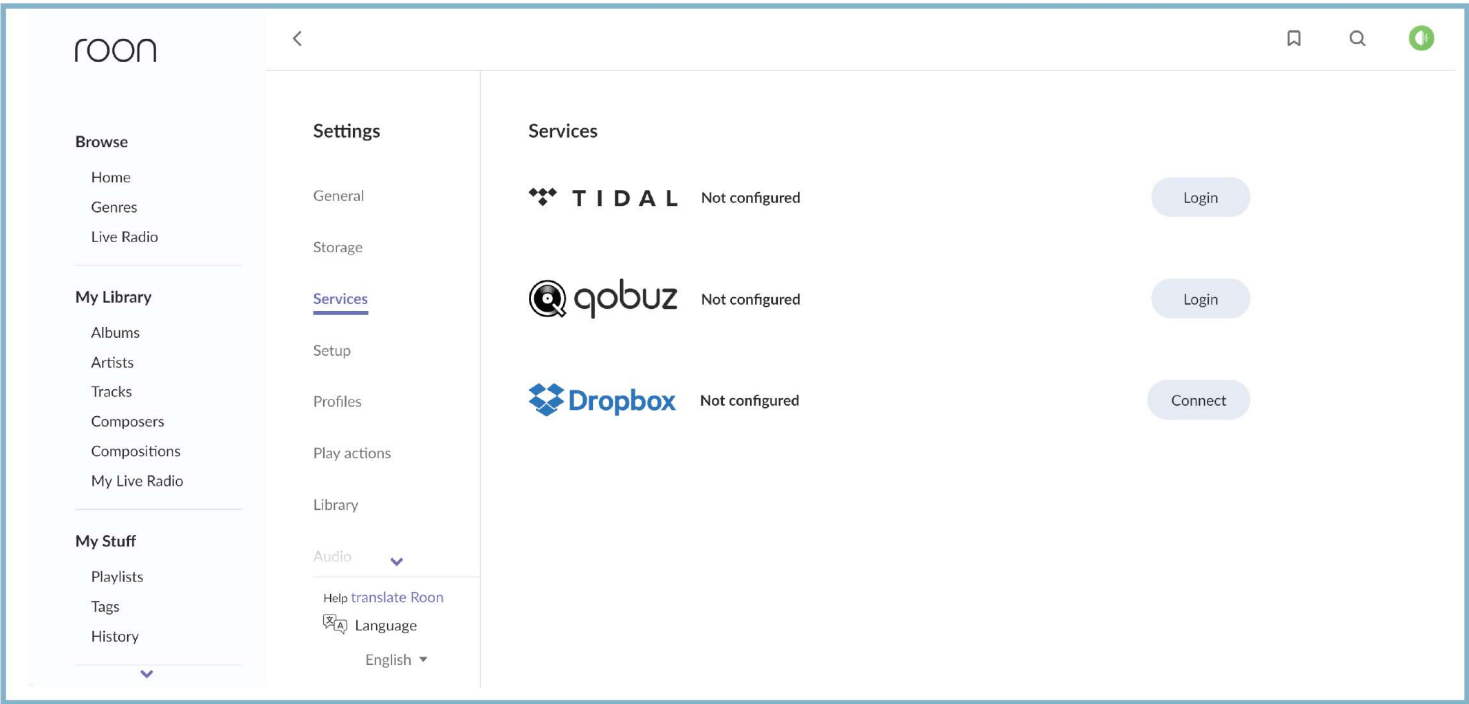
## Importing your music:



- Now it's time to import your music! Keep in mind that Roon will not copy or move your audio files anywhere. When we say "import" we mean; let Roon show you your music, not let Roon copy, edit, delete and move around your audio files without you knowing. That's why when you import music into Roon, you do so via a "Watched Folder" -- Roon looks at what's in the folder and shows it to you.
- Roon already knows where your iTunes library is\* and where your operating system's default music folder is, but you might also keep your music elsewhere. If you keep all of your music in your iTunes library or default music folder, just check off the respective boxes and click next.
- If you keep your music elsewhere, you'll need to add a watched folder and tell Roon where your music is. Click **Add Folder** if your music is on your computer's hard drive, or an attached USB drive, and navigate to your music folder.
- Click **Add Network Folder** if you keep your music on a NAS device. If you have any trouble with the on screen instructions after clicking Add Network Folder, take a look.
- For additional details on importing your music, visit <https://help.roonlabs.com/portal/en/kb/articles/local-files>

## Linking Qobuz and Tidal:

- Qobuz and Tidal are subscription-based music streaming service that provides millions of lossless audio tracks for streaming. Roon will prompt you to add your Qobuz account on first launch, but you can always link Roon and Qobuz at any time from the Services tab of Settings. Click the navigation icon at the top left of the Roon window, then click Settings, and open the Services tab. From here you can click Login to link your Qobuz and Tidal accounts in Roon:



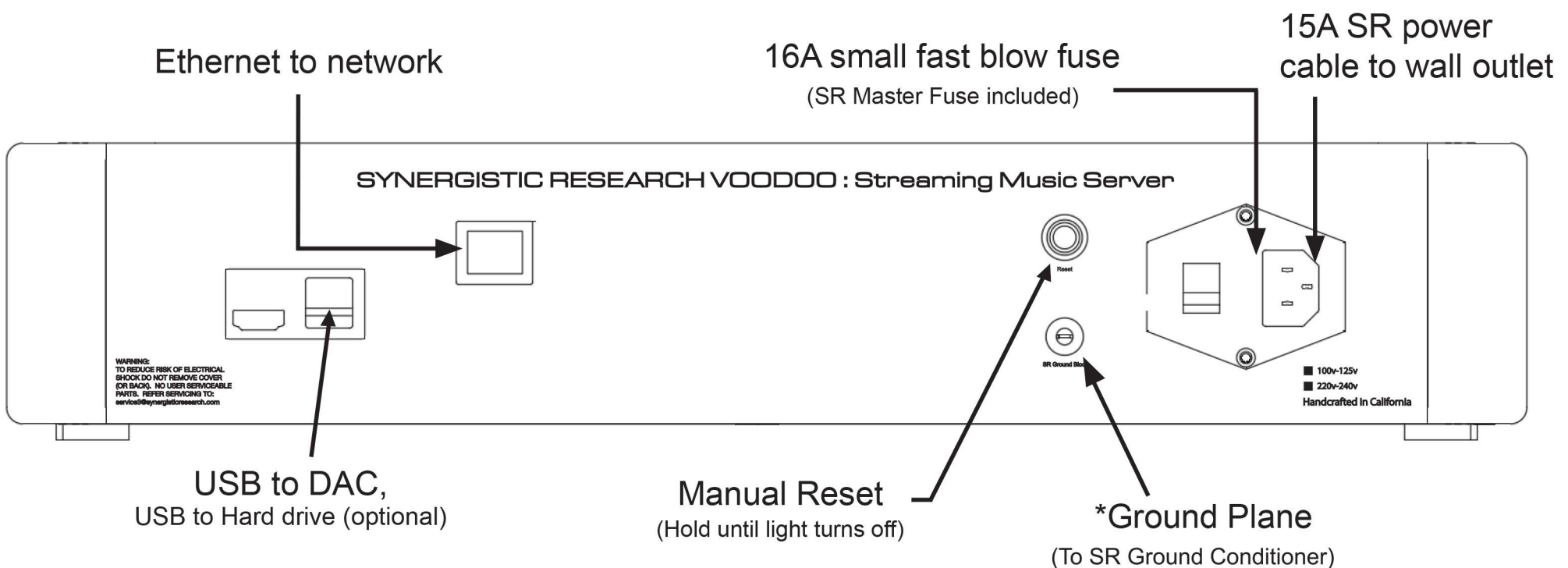
- For additional details on Qobuz and Tidal visit:
- [https://help.roonlabs.com/portal/en/kb/articles/qobuz#Why\\_arent\\_the\\_latest\\_albums\\_on\\_Qobuz\\_available\\_in\\_Roon](https://help.roonlabs.com/portal/en/kb/articles/qobuz#Why_arent_the_latest_albums_on_Qobuz_available_in_Roon)
- [https://help.roonlabs.com/portal/en/kb/articles/tidal#Enabling\\_TIDAL](https://help.roonlabs.com/portal/en/kb/articles/tidal#Enabling_TIDAL)



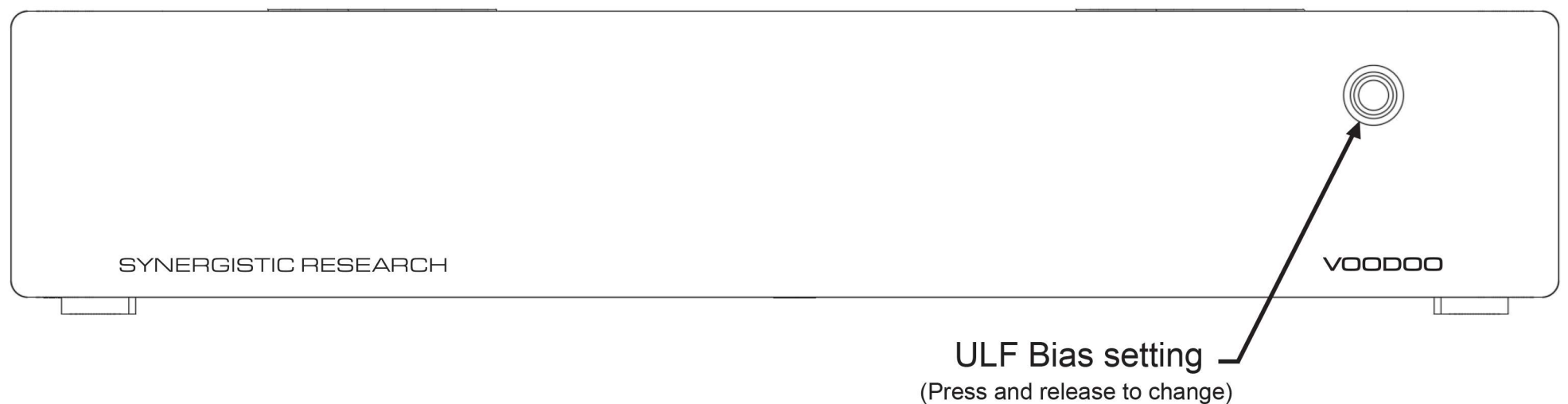
# Reference Diagrams

## Voodoo Server setup -

## Rear View



\* **Ground Plane** - Ground plane designed for use with Synergistic Research ground blocks and Synergistic Research grounding cables only (sold separately).



### Placement:

- Locate your Synergistic Research Voodoo Server on an audio rack shelf or an isolated amp stand. It is necessary to ensure at least 5 inches of clearance above the Voodoo Server to allow for proper ventilation. Do not place it on top of or directly underneath any other components. If you are using two Voodoo Servers, each should be placed on its own isolated shelf.
- Place the included MiG Isolation Footers under your Voodoo Server—one in the front with the "round side" facing up and two at the back corners with the "round side" facing down. After your Voodoo Server has been powered on and operating for at least 24 hours, flip all three MiG Footers to the opposite orientation. Alternate between both configurations and listen carefully to determine which option delivers the best audio experience in your system.

### Power Up:

- Start with the red switch on the rear of the unit in the off position.
- Connect the supplied SR power cable to your Voodoo Server via the 15 amp IEC connection in the rear of the unit.
- Plug the SR power cable into the wall or your Synergistic Research power conditioner.
- Connect your Voodoo Server to your network via the ethernet port in the rear of the unit. We highly recommend using a Synergistic Research Ethernet cable for maximum performance.
- Connect your Voodoo Server to your DAC via one of the two USB ports in the rear of the unit. We highly recommend using a Synergistic Research USB cable for maximum performance.
- Optional - Connect the "SR Ground Block" port to a Synergistic Research Active Ground Block via a Synergistic Research ground cable only.
- Flip the red switch on the rear of the unit to on to power the Voodoo Server.



**SYNERGISTIC RESEARCH**

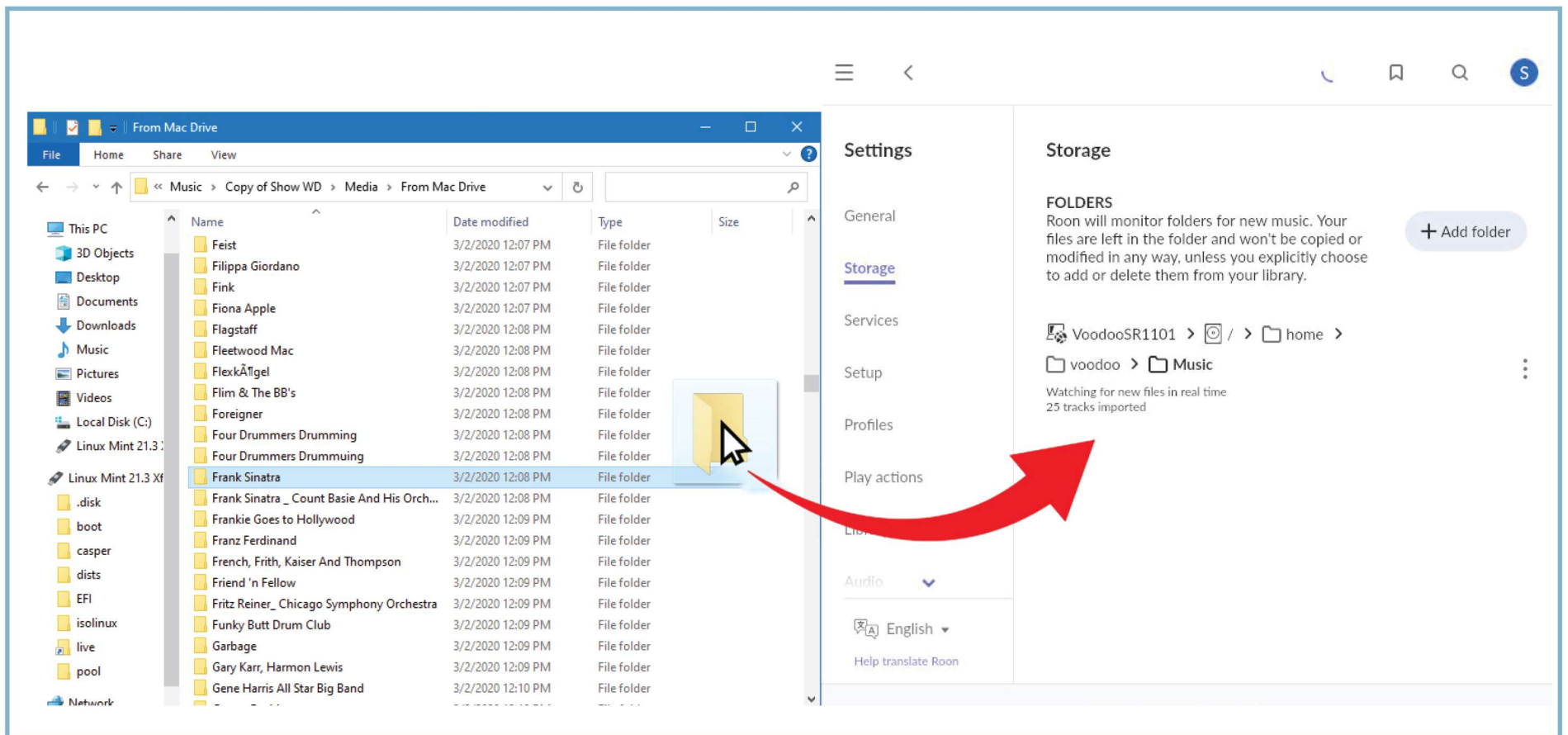
NEVER COMPROMISE • SYNERGISTICRESEARCH.COM



# Quick Start Guide

## Adding music to the Voodoo hard drive:

- From a separate computer on the same network as the Voodoo.
  - Open your file explorer and navigate to the folder(s) containing your music files.
  - Download the Roon software on your computer and connect to your Voodoo.
  - Click on the menu button (three bars in the top left).
  - Then settings, then go to Storage.
  - Click “+ Add Folder”
  - Navigate to Voodoo>home>voodoo>Music
  - Select the music folders you would like to add to the Voodoo hard drive
  - Drag the folders from your file explorer to the “Music” folder on Roon
  - Files will begin to transfer.



- For a full Roon guide visit <https://help.roonlabs.com/portal/en/home>



**SYNERGISTIC RESEARCH**  
NEVER COMPROMISE • [SYNERGISTICRESEARCH.COM](https://www.synergisticresearch.com)

# GALILEO DISCOVERY

The refinement of perfection.



Galileo Discovery Ethernet cables are refined around a new UEF Graphene Filter first developed for our SRX cable loom and feature a new UEF Compound developed for our Purple Fuses to push the envelope on resolution and musicality. UEF Graphene Shielding now mimics the pattern we designed for our SRX cable loom for a noticeably lower noise floor. To increase frequency extension and sound stage scale, we upgraded the UEF Ground Plane with an improved UEF compound developed for our Purple Fuses. Lastly, we condition the cable with a Long Duration High Voltage process developed for our flagship SRX cable loom and Purple fuses. Optionally, the outer shield can be attached to a wall socket ground with an included ground plug or to an SR Passive Ground Block or an SR Active Ground Block for further improvements to systems that employ our Ground Block technology. For bespoke cable voicing, we include our highest-performance SRX UEF Tuning bullets so you can custom-tune the cable to your system. Listen with either Gold bullets for liquidity and warmth or Silver bullets for high-frequency extension with pinpoint image placement, and select the option that sounds best to you in your system. Of course, you can opt not to use Tuning Bullets if you wish. Sold with a no-risk money-back guarantee through your authorized Synergistic Research dealer in participating markets.



**SYNERGISTIC RESEARCH**

NEVER COMPROMISE • [SYNERGISTICRESEARCH.COM](http://SYNERGISTICRESEARCH.COM)